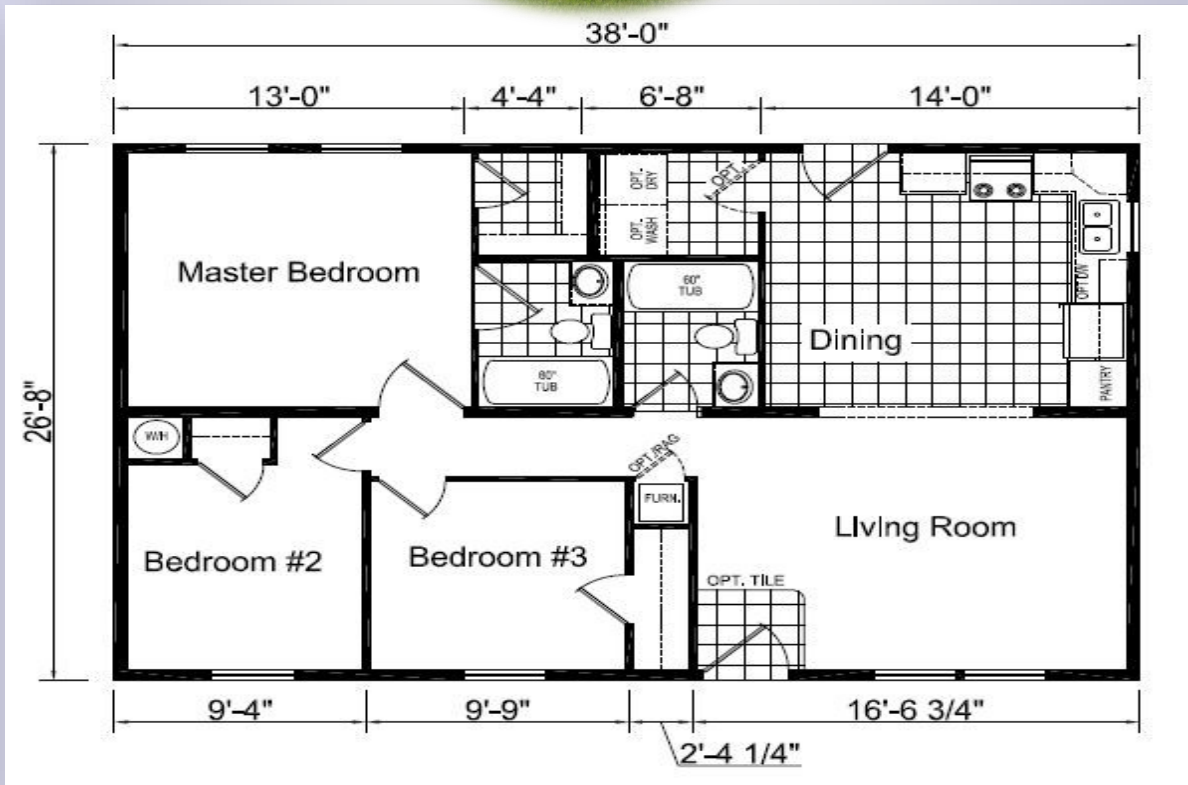


# EAGLE RIVER 42J6000



EAGLE RIVER HOMES



\*Model Pricing Subject to Change Without Notice Due to Market Volatility

**\$121,754 AS SHOWN**

**\$121,754**



**ShowcaseHomesOfMaine.com**

**"Custom Modular Home Builder"**

# OPTIONS

**BASE PRICE**

**\$114,516.00**

**Options:**

<b>Maine Package:</b> 40LB Roof (16" O.C.), Ice Guard, Pier Savers, Furnace Stack Extension, Combo CO2 & Smoke Detectors, Furnace Safety Switch, Well Pump Circuit Conduit, Wind Wrap	\$2,834.00
Hickory Cabinets and Drawer Fronts (Flat Panel)	\$125.00
Deluxe Molding Throughout	STD
Brunswick Gray Deluxe Siding	\$570.00
R-19 Wall Insulation (2"x6" Walls)	STD
R-30 Roof Insulation	\$299.00
R-22 Floor Insulation	\$399.00
Wall Mount Heat Registers	\$50.00
Foyer Entry - LINO	STD
Dishwasher <b>*Please note that appliances may not be available at time of order due to widespread shortages; see your sales rep for details</b>	\$425.00
Microwave Over Range	\$565.00
Storm Doors (Installed)	\$558.00
Extra Interior Door - Utility Room	\$85.00
100AMP Long Box	\$60.00
Ceiling Fan - Living Room	\$159.00
(2) CATV Jacks	\$50.00
Single Lever Faucet at Kitchen	\$199.00
Whole House Water Shut Off Valve	\$65.00
Exterior Faucet	\$55.00
Real Wood Cabinet Doors and Stiles	\$605.00
One Piece Tub/Showers	STD
Wall Towel Cabinet	<u>\$135.00</u>
Options total	\$7,238.00

**SELLING PRICE**

**\$121,754.00**

\*\*Windzone II add \$2,500



**EAGLE RIVER HOMES**



**ShowcaseHomesOfMaine.com**

**"Custom Modular Home Builder"**

[www.showcasehomesofmaine.com](http://www.showcasehomesofmaine.com)